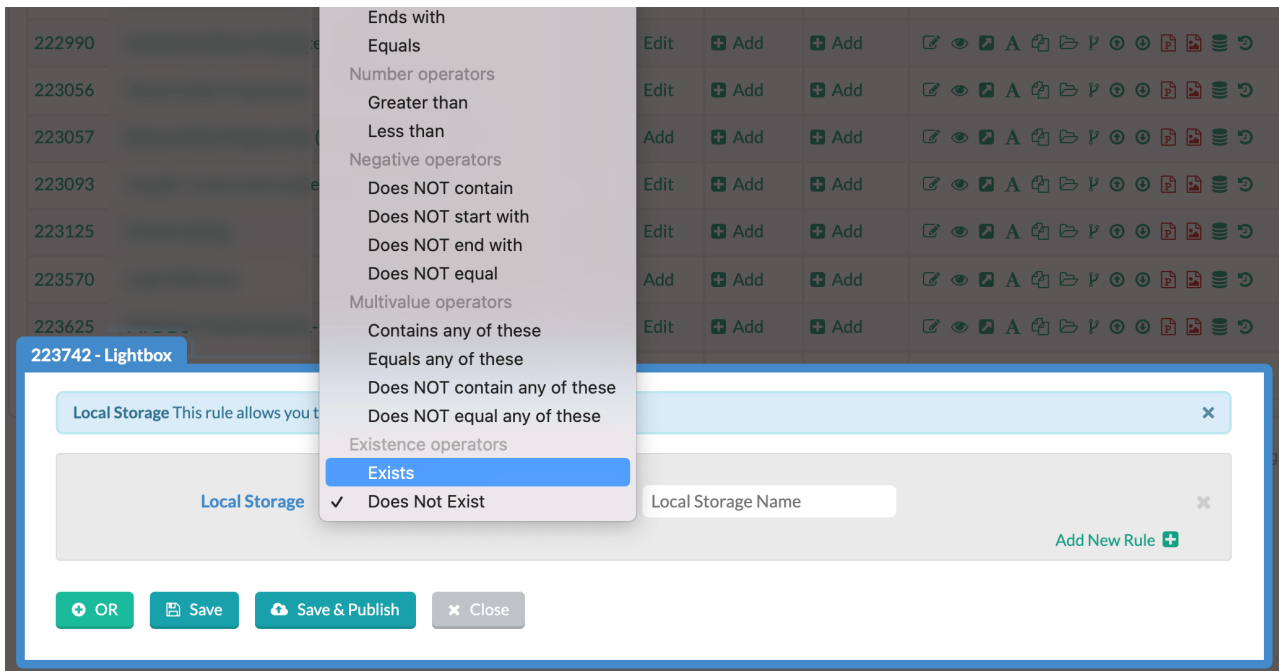


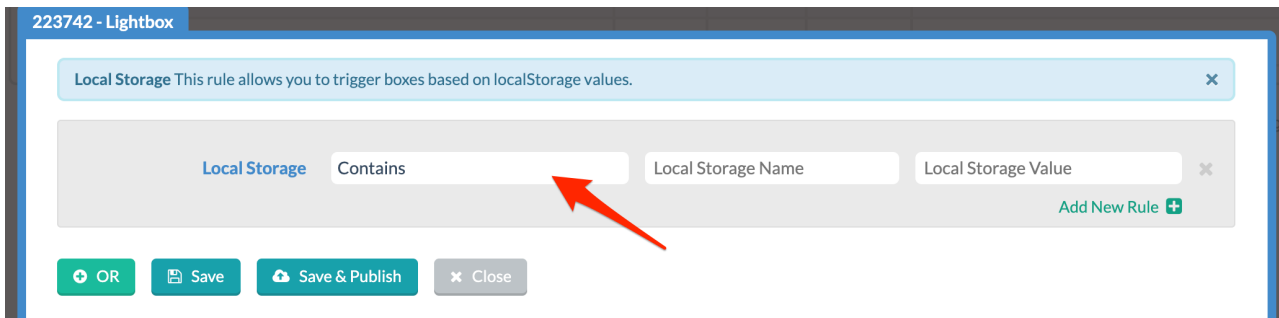
How to Target Based on Local Storage Values

Last Modified on 06/11/2026 10:07 am EDT

Digioh's **Conditions Editor** allows you to target visitors based on whether Local Storage values exist.



You can also target based on specific Local Storage Names and Values, as shown below.



To add Local Storage targeting to a Campaign, open the Conditions for your desired campaign. Add a Local Storage rule, then set up your conditions, Name, and Value as needed.