

Adding CSS to Pop-ups and Widgets

Last Modified on 06/10/2026 11:02 pm EDT

What you'll learn

- Add Extra CSS to editor elements
- Add Wrapper CSS to editor elements
- Add CSS to the Form
- Add CSS to the Outer Campaign

Digioh's Campaign Editor is built to give you a ton of control without knowing any code - but with a little CSS, you can unlock even more customization in your pop-ups, forms, quizzes and other onsite experiences. There are several ways to add CSS to elements in the editor that we will discuss below.

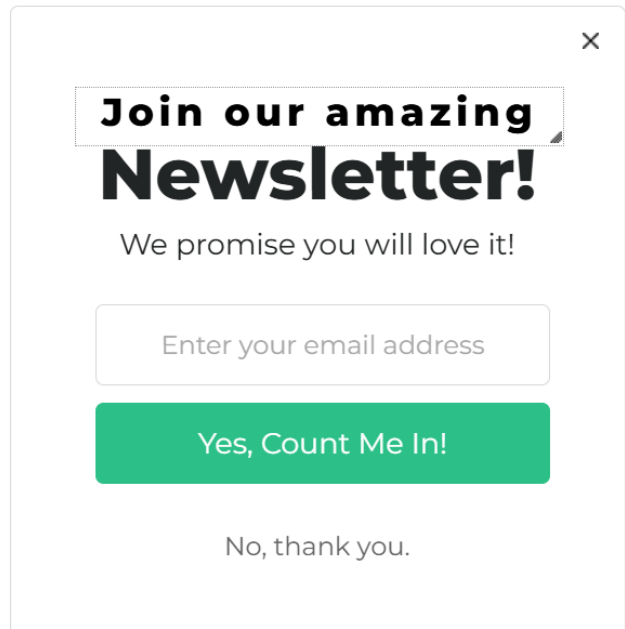
Add CSS to Elements in the Editor

Extra CSS Styles

Text, Buttons, Images and HTML elements each have a section to add **Extra CSS Styles**. This lets you change the look of your element beyond the native options.

Enter the CSS Property and Value individually into the inputs. For example, to add "letter-spacing: 3px;" enter "letter-spacing" in the CSS Property, and "3px" in the Value field.

The screenshot shows the Digioh Campaign Editor interface. The 'Extra CSS Styles' section is highlighted with a red box. It contains a toggle switch that is turned on, and two input fields: 'CSS PROPERTY' with the value 'letter-spacing' and 'VALUE' with the value '3px'. There are also '+' and '-' buttons next to the value field.



Wrapper CSS

Wrapper CSS is a container around the component, that lets you apply CSS like absolute positioning, margins, padding, or z-index.

For example, if you add `z-index : 0` to a wrapper CSS, this will place the image behind a text and any other element.

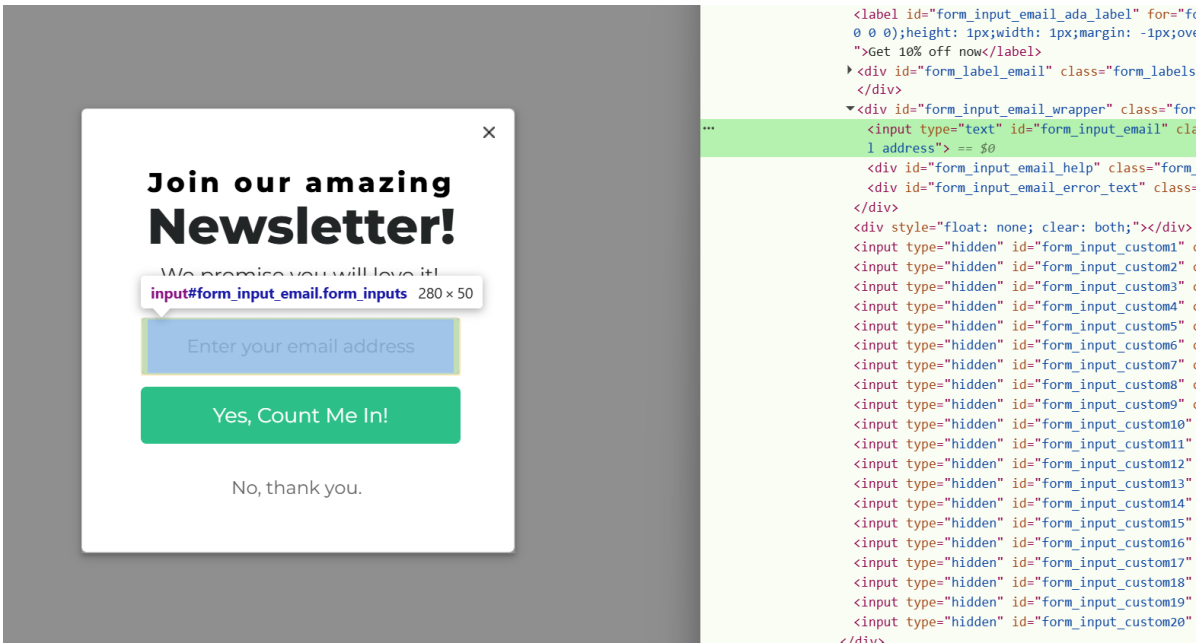
The image shows a design editor interface on the left and a rendered newsletter sign-up form on the right. The editor has several sections: an image selection dropdown with 'MDT_ic1.png' and a '+ Add Image' button; an 'Image Border' section with controls for 'BORDER STYLE' (solid), 'COLOR' (white), 'WIDTH' (0), 'RADIUS' (6), and 'BORDER PADDING' (0); 'Copy Design Settings From' and 'Apply Design Settings To' sections with dropdowns for 'Main Page' and 'Image 1'; and an 'Extra CSS Styles' section with a toggle switch. The 'Wrapper CSS' section is highlighted with a red box and contains a toggle switch that is turned on, a description: 'A wrapper is a container around a component where you can apply CSS, like positioning and z-index.', and a table with one row: 'z-index' with a value of '0' and '+' and '-' buttons.

The rendered form on the right is a newsletter sign-up. It features a close button (X) in the top right corner. The main heading is 'Join our amazing Newsletter!' with a red flower icon. Below the heading is the text 'We promise you will love it!'. There is an input field for 'Enter your email address' and a green button labeled 'Yes, Count Me In!'. At the bottom, there is a link for 'No, thank you.'

Another example is using `left : 10px` to ensure an elements always sits 10px off the left side of the campaign.

Add CSS to Form Fields with Form CSS

While options like height and border color are available in the editor, sometimes you may need something more specific.



To add CSS to a specific ID or class of a form field, preview the campaign and inspect the element with your browser's Dev Tools to get the ID or class of that particular element.

Note: Make sure you get the class or IDs from the preview, rather than the editor. You may have to Save and Preview to see the changes.

For example, to add a 2px bottom border to a specific field, insert the following code:

```
#[FIELD_ID_HERE] {  
border-bottom: 2px solid black;  
}
```

Layout **Form** Buttons Text Images HTML

Form Fields Labels Inputs

Form

AFTER FORM SUBMIT
Show Thank You Page

OVERRIDE BOX INTEGRATIONS
Submit form and run all Box integrations (default)

LOADING IMAGE
Show default loading image on submit

FORM CSS

```
#form_input_email {
border-bottom: 2px solid black;
}
```

Form Size **Form Position**

WIDTH HEIGHT X Y CENTER

280 62 52 168

Join our amazing
Newsletter!

We promise you will love it!

Enter your email address

Yes, Count Me In!

No, thank you.

This will add a 2px black border to the bottom of that field.

You can also add styles to all of the same type of element, like all text fields or buttons.

For example, to remove the outline of all text fields when selected, add this code:

Join our amazing
Newsletter!

We promise you will love it!

Enter your email address

Yes, Count Me In!

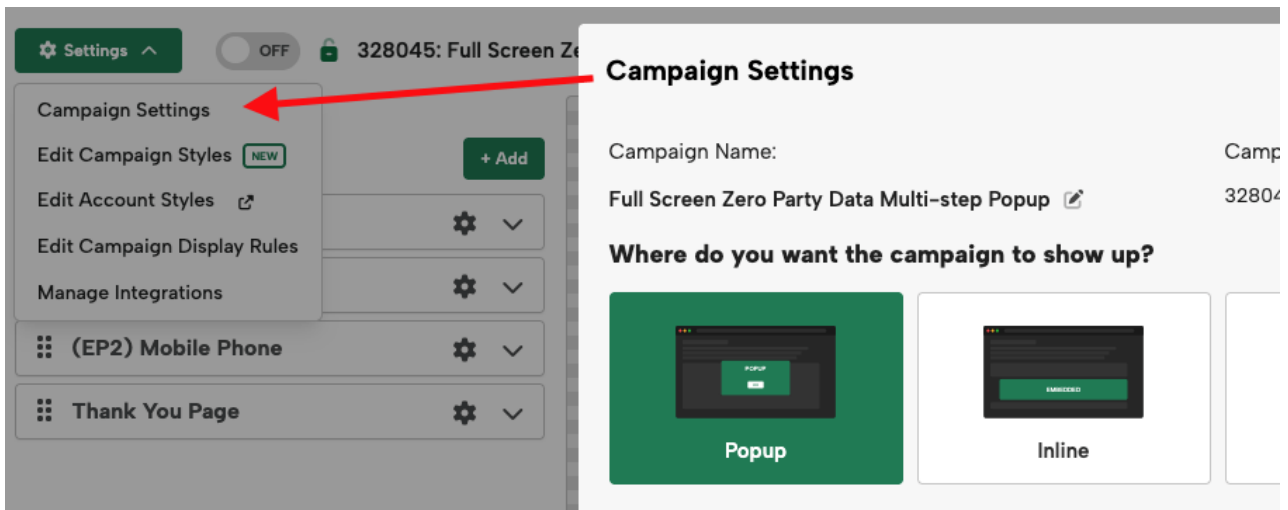
No, thank you.

```
input[type=text] {  
  outline: none;  
}
```

Note: If you don't see changes, mark your new styles as **!important**.

Add CSS to the Outer Campaign

To add CSS that applies to the campaign itself, go to the Settings dropdown and open the Campaign Settings.



Towards the bottom is an **Extra CSS Styles** field. Here, you can add extra details like a shadow or margins.

Enter the information as you would normally in a stylesheet, separated by semicolons.

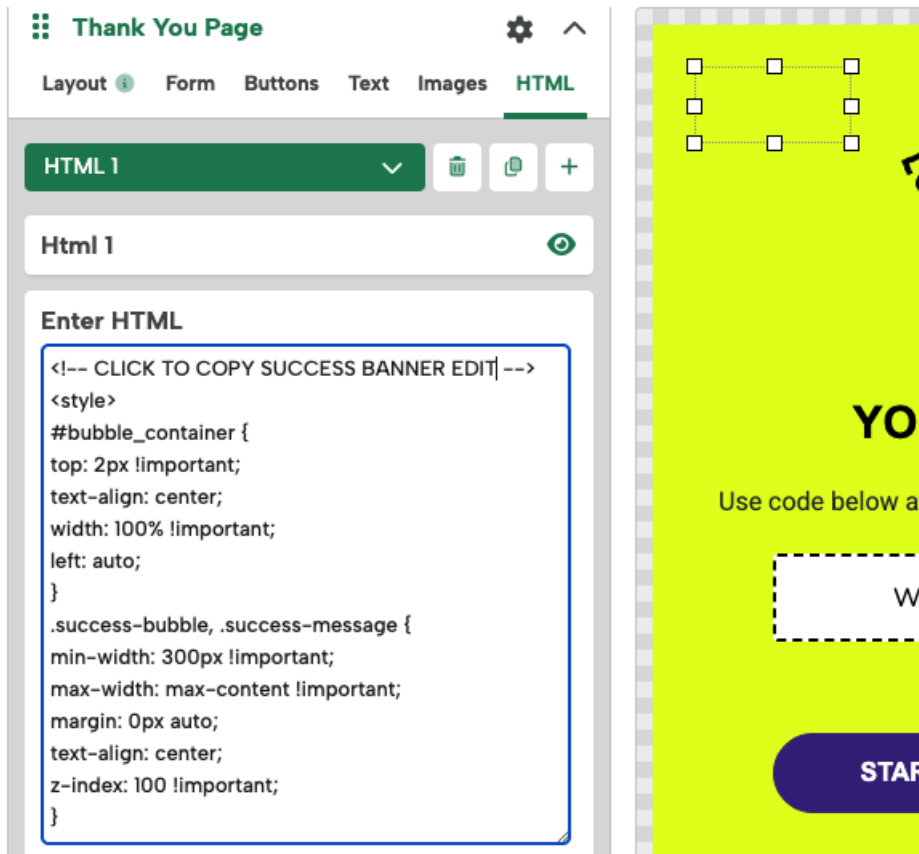


Save and preview your campaign to view your changes.

Additional Notes:

HTML Blocks

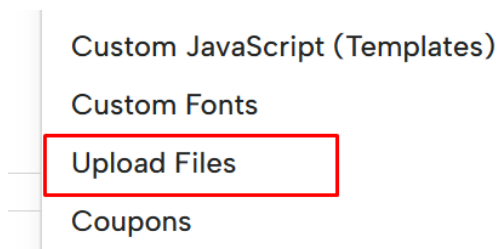
To maintain organization and consistency, we recommend using the dedicated CSS spaces above when customizing your campaign. However, you can also use an HTML block to add `<style>` code into for more custom needs.



Stylesheets

If you're inclined to use CSS to set a lot of your styling, you can also link an external **stylesheet**. This stylesheet would need to reference the relevant IDs and classes from the campaign (see above "Add CSS to Form fields with Form CSS" section for details.).

To link to a CSS file for your campaign to reference, upload the CSS file to your Upload Files section.



Then select Upload Stylesheet option

Upload a file of any type for download by site visitors, for example a PDF. Files uploaded here are available via the Download File button action.

Files

Upload Image Upload Font Upload File Upload Stylesheet Upload Multi

FileName	Size	Type	ContentType	Active	Created		
whiteyourlogohere.png	4340	image	image/png	True	3/18/2025	Replace	Delete
bluecitybg2.png	317395	image	image/png	True	3/18/2025	Replace	Delete
Closeblack.png	1695	image	image/png	True	3/18/2025	Replace	Delete
your_logo_sample.png	3458	image	image/png	True	4/22/2025	Replace	Delete
x_close_button_dark.svg	871	image	image/svg+xml	True	4/22/2025	Replace	Delete
clean.svg	2861	image	image/svg+xml	True	4/22/2025	Replace	Delete
Main_Image_1.png	160768	image	image/png	True	4/22/2025	Replace	Delete
Image_2.png	142791	image	image/png	True	4/22/2025	Replace	Delete
Image_3.png	122067	image	image/png	True	4/22/2025	Replace	Delete
Logo_Dark.png	4493	image	image/png	True	4/22/2025	Replace	Delete
Logo_Dark.png	4493	image	image/png	True	4/22/2025	Replace	Delete
Fleur_Main_Image_400_x_600.png	160768	image	image/png	True	4/22/2025	Replace	Delete

Then, link to your stylesheet in an HTML block.

Main Page

Layout Form Buttons Text Images HTML

HTML 1

Html 1

Enter HTML

```
<link rel='stylesheet' href='styles.css'>
```

Depending on your CSS skills and knowledge, you can really push the envelope on your campaign designs!